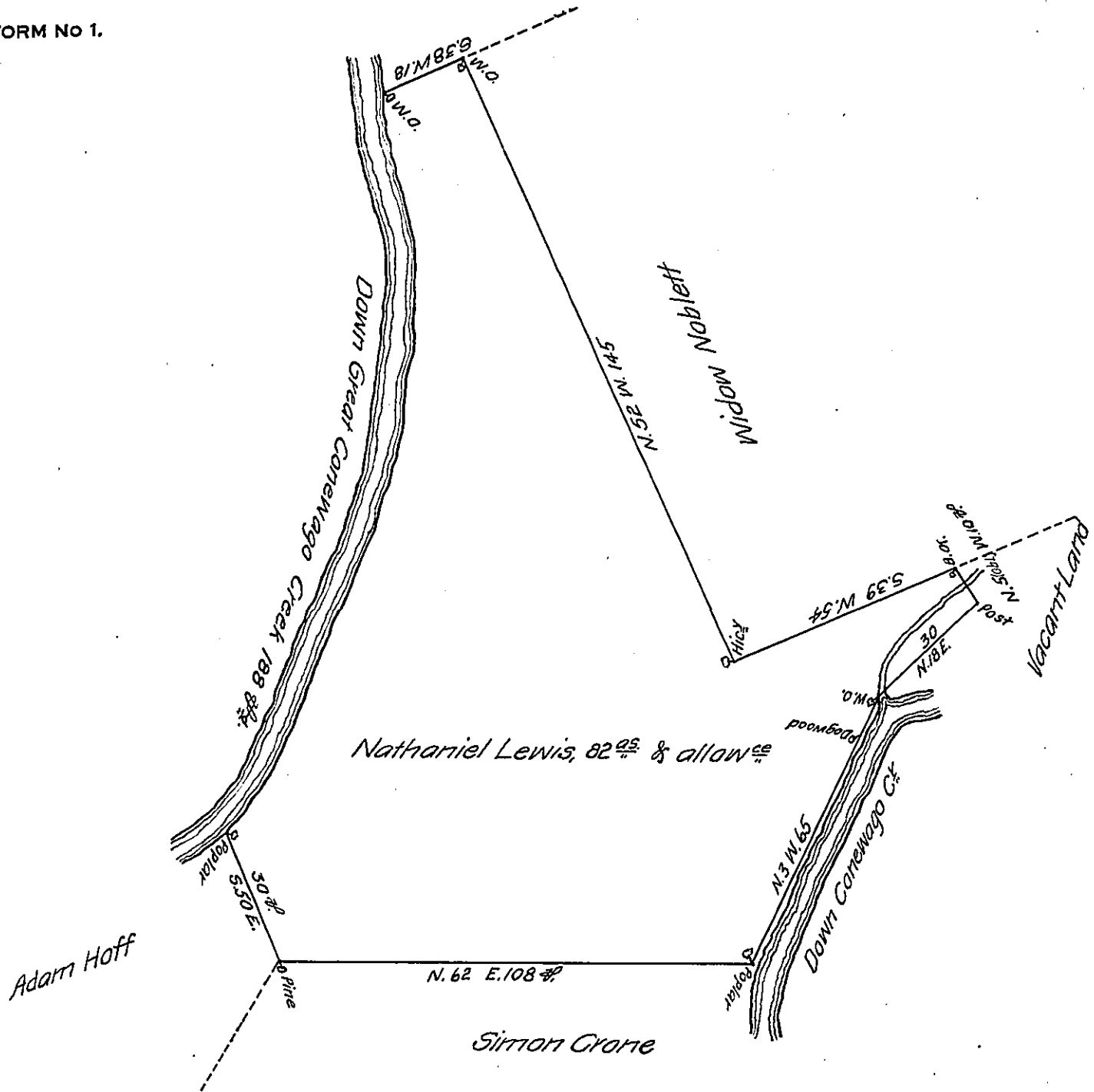


FORM NO 1.



In pursuance of an Application N^o 5249. Dated the 15th day of November 1768. There was surveyed unto Nathaniel Lewis the above described Tract of Land situate in Newberry Township York County Containing Eighty-two acres & allowance of 6 acres $\frac{1}{2}$ Cent. ——— Called ———

Chas. Lukens, D. S.

To John Lukens, Esq^r
Surveyor Gen^l.

IN TESTIMONY that the above is a copy of the original remaining on file in the Department of Internal Affairs of Pennsylvania, made conformably to an Act of Assembly approved the 16th day of February, 1833, I have hereunto set my Hand and caused the Seal of said Department to be affixed at Harrisburg, this sixteenth day of December, 1907

Henry Horck
Secretary of Internal Affairs.